



# DNA ANALYSIS OF SPELT GENOTYPES BY THE IRAP MARKERS

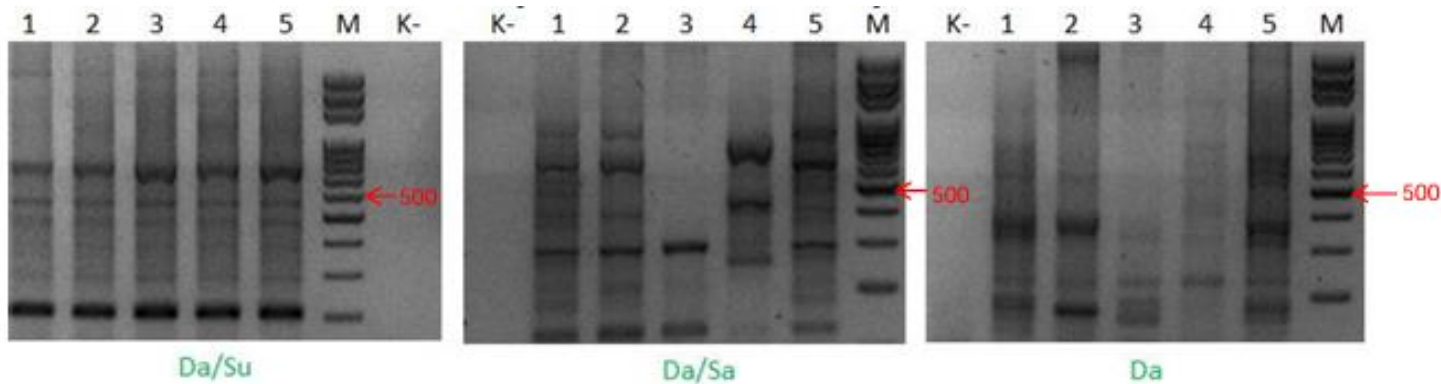
*Palekha D. Yu*<sup>1</sup>, *Moskalenko N. S*<sup>2</sup>, *Morgun B. V*<sup>1</sup>, *Nitovska I. O*<sup>1</sup>

<sup>1</sup> *Institute of Cell Biology and Genetic Engineering of the National Academy of Sciences of Ukraine, Kyiv, [dmytropalekha@gmail.com](mailto:dmytropalekha@gmail.com)*

<sup>2</sup> *ESC "Institute of Biology and Medicine" Taras Shevchenko National University of Kyiv*

The **aim** of this work was to determine the conditions of IRAP analysis for the molecular genetic characterization of spelt genotypes.

Electropherograms of PCR analysis products of spelt plants DNA amplified with primers to the LTR retrotransposons



- 1 - Zorya Ukrainy
- 2 - Zuricher Rotkorn
- 3 - Filderweiss
- 4 - Oberkulmer Rothkorn
- 5 - Ukrainian breeding line *T. spelta* 4



Classification of primers according to their effectiveness in *T. Spelta* DNA analysis

Primer	Retrotransposons	Efficiency of the primer
Wh	Wham	Inefficient
Da	Daniella	Highly efficient
Sa	Sabrina	Highly efficient
Ni	Nikita	Highly efficient
St	Stowaway	Highly efficient
Su	Sukkula	Low-efficient
Wis	Wis2	Low-efficient
Da/Su	Daniella/Sukkula	Highly efficient
Da/Sa	Daniella/Sabrina	Highly efficient
Su/Sa	Sukkula/Sabrina	Highly efficient
Su/Ni	Sukkula/Nikita	Non-working
Su/St	Sukkula/Stowaway	Inefficient
Sa/Wh	Sabrina/Wham	Non-working
Sa/St	Sabrina/Stowaway	Highly efficient